

Fermat-1 RT 200MD Log

Format: Fermat-1 RT Log 8.5in

Vertical Scale: 1:200

Graphics File Created: 05-Jan-2009 04:08

PIP SUMMARY

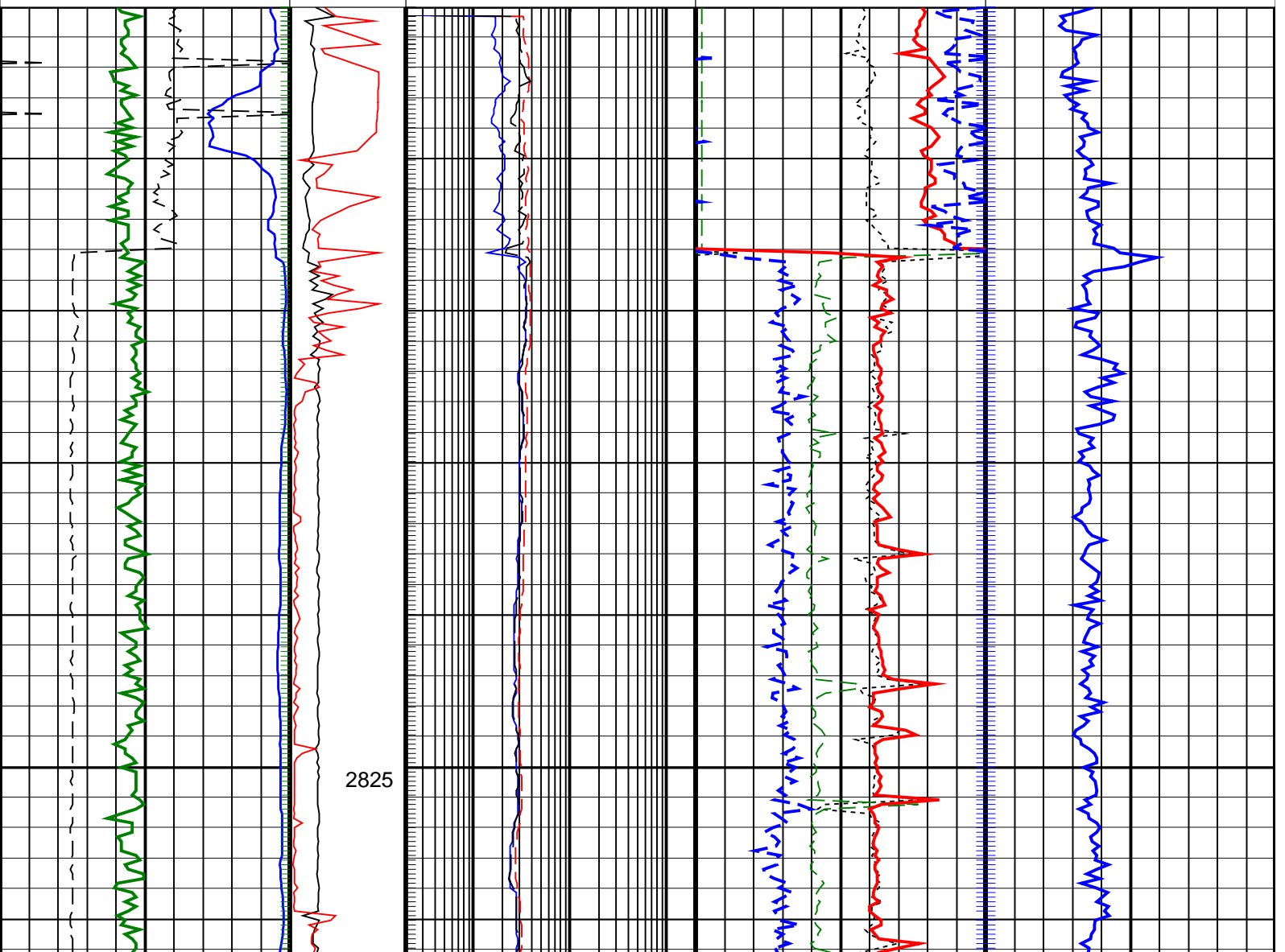
Gamma Ray Samples

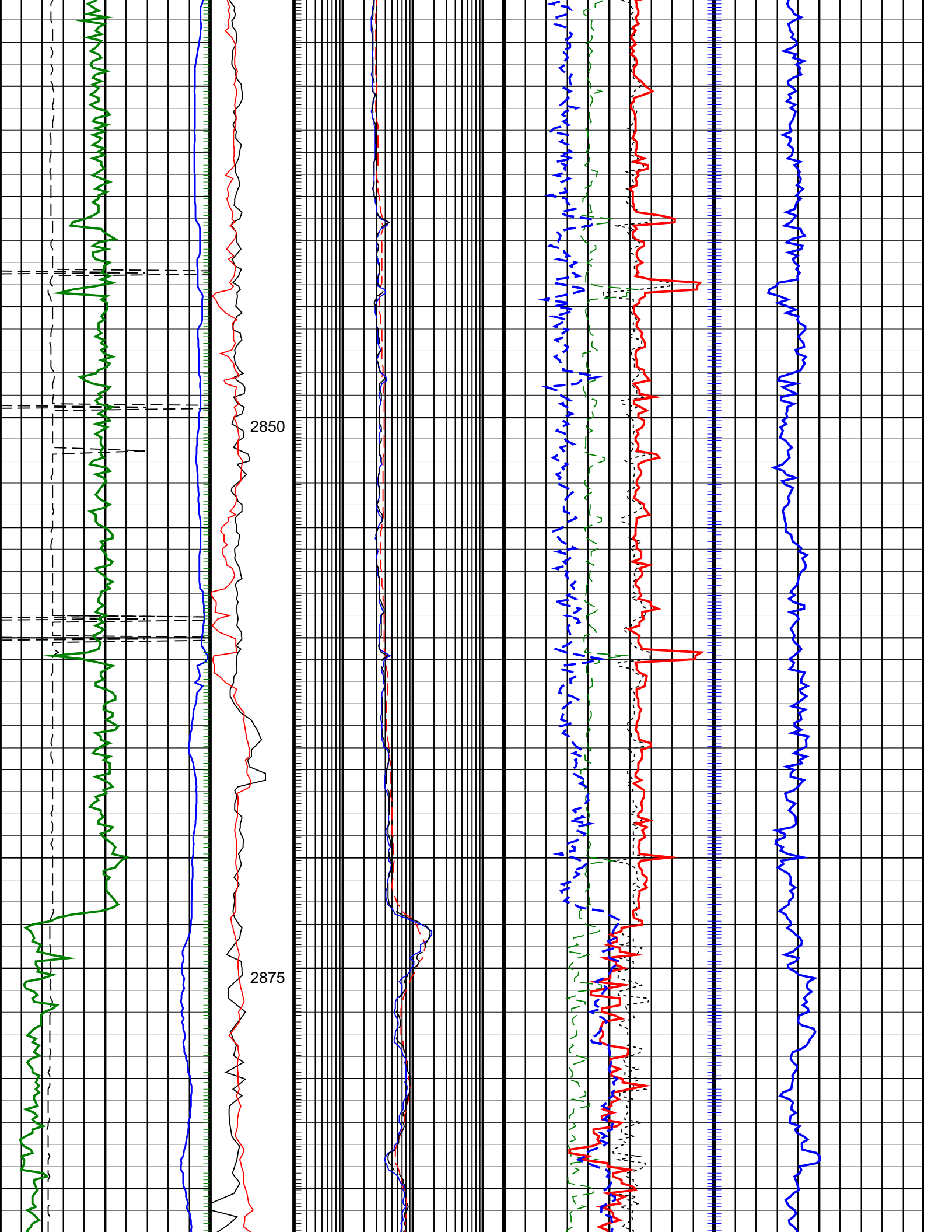
Delta-T Samples

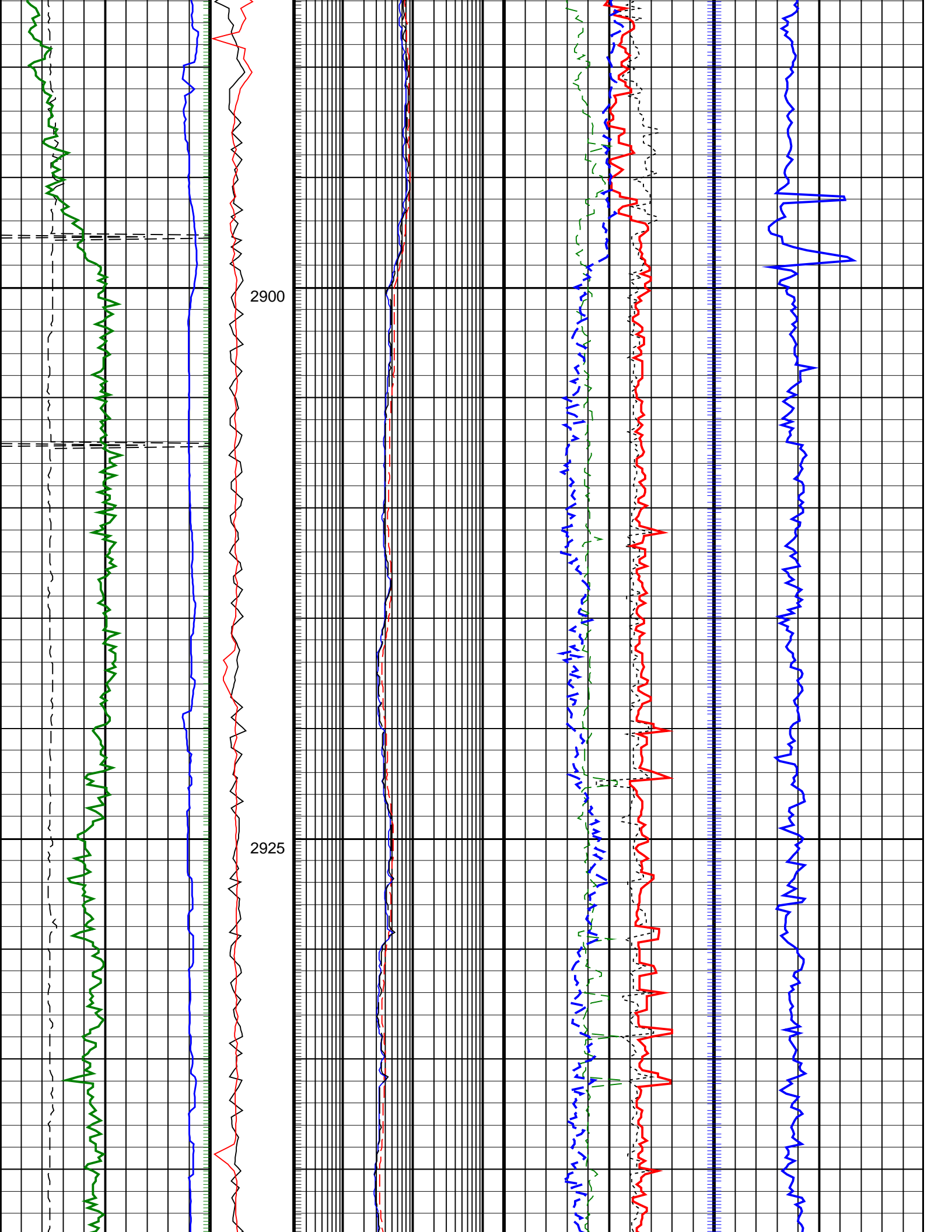
Resistivity Samples

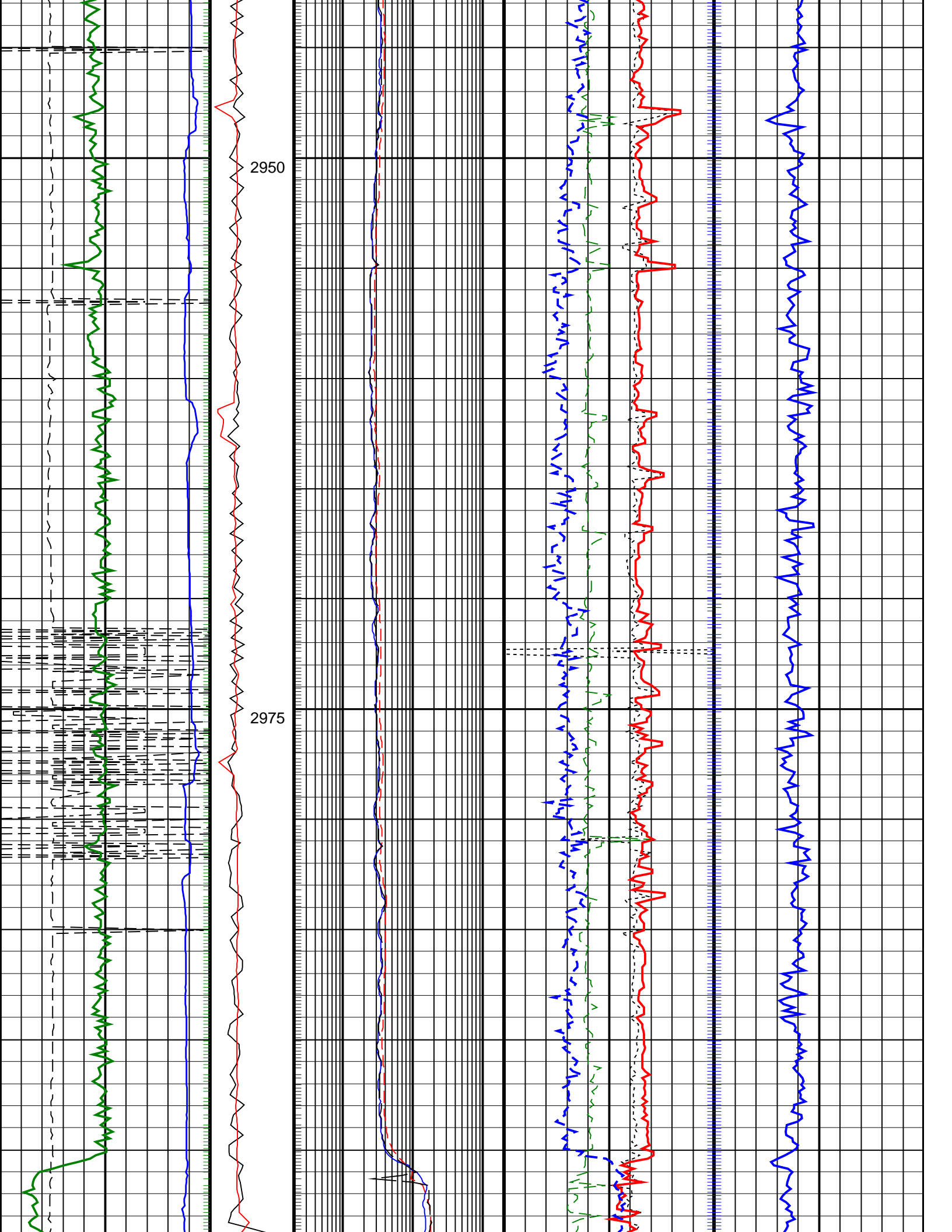
Neutron Samples

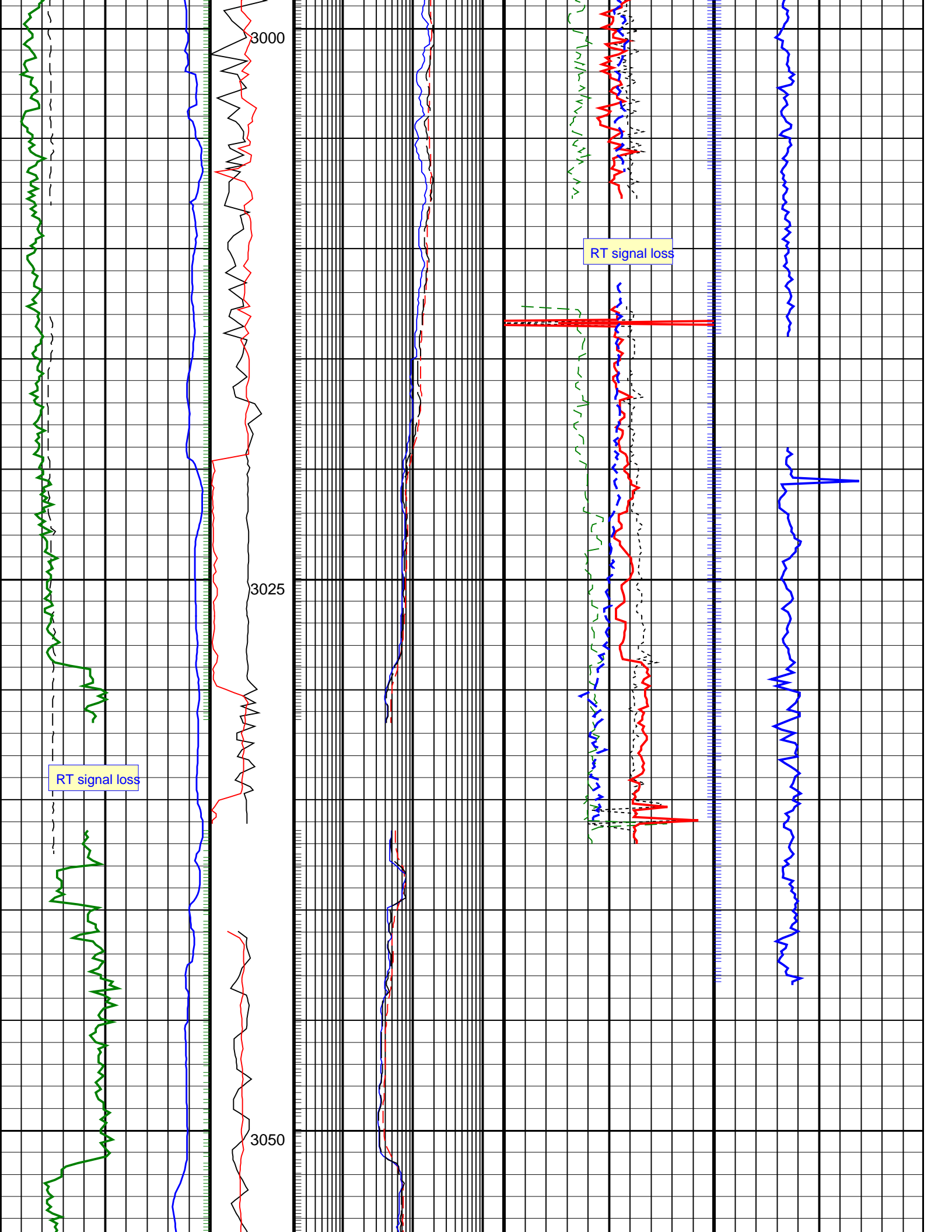
			Thermal Neutron Porosity, Real-Time (TNPH_ADN_RT) 45 (PU) -15
ARC Gamma Ray, Real-Time (ARC_GR_RT) 0 (GAPI) 200	ARC BHCorr Phase-Shift Resistivity 40-in. at 2 MHz, Real-Time (P40H_RT) 0.2 (OHMM) 200	Photoelectric Factor, Real-Time (PEF_ADN_RT) 0 (----) 10	
Average Borehole Diameter, Real-Time (ADIA_ADN_RT) 6 (IN) 16	MWD Collar RPM (CRPM_RT) (RPM) 0 250	ARC BHCorr Phase-Shift Resistivity 16-in. at 2 MHz, Real-Time (P16H_RT) 0.2 (OHMM) 200	Bulk Density Correction, Real-Time Computed Downhole (DRHO_DH_ADN_RT) -0.25 (G/C3) 0.25
ROP*5 (ROP5) (M/HR) 200 0	PKPK_RPM (Stick_RT) (RPM) 0 500	ARC BHCorr Attenuation Resistivity 40-in. at 2 MHz, Real-Time (A40H_RT) 0.2 (OHMM) 200	Bulk Density, Real-Time Computed Downhole (RHOB_DH_ADN_RT) 1.95 (G/C3) 2.95
			Delta-T Compressional, Real-Time (DTCO_RT) 40 (US/F) 140

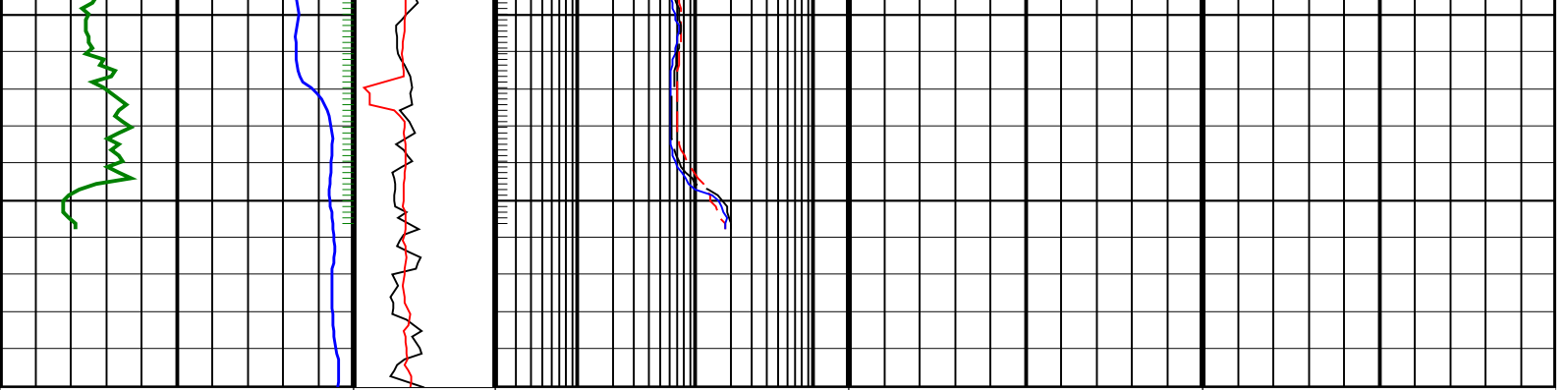












<p>ROP*5 (ROP5) 200 (M/HR) 0</p>	<p>PKPK RPM (Stick_RT) (RPM) 0 500</p>	<p>ARC BHCORR Attenuation Resistivity 40-in. at 2 MHz, Real-Time (A40H_RT) (OHMM) 200</p>	<p>Bulk Density, Real-Time Computed Downhole (RHOB_DH_ADN_RT) (G/C3) 1.95 2.95</p>	<p>Delta-T Compressional, Real-Time (DTCO_RT) (US/F) 40 140</p>
<p>Average Borehole Diameter, Real-Time (ADIA_ADN_RT) (IN) 6 16</p>	<p>MWD Collar RPM (CRPM_RT) (RPM) 0 250</p>	<p>ARC BHCORR Phase-Shift Resistivity 16-in. at 2 MHz, Real-Time (P16H_RT) (OHMM) 200</p>	<p>Bulk Density Correction, Real-Time Computed Downhole (DRHO_DH_ADN_RT) (G/C3) -0.25 0.25</p>	
<p>ARC Gamma Ray, Real-Time (ARC_GR_RT) (GAPI) 0 200</p>		<p>ARC BHCORR Phase-Shift Resistivity 40-in. at 2 MHz, Real-Time (P40H_RT) (OHMM) 200</p>	<p>Photoelectric Factor, Real-Time (PEF_ADN_RT) (-----) 0 10</p>	
			<p>Thermal Neutron Porosity, Real-Time (TNPH_ADN_RT) (PU) 45 -15</p>	

PIP SUMMARY

- ┆ Gamma Ray Samples
- ┆ Resistivity Samples
- Delta-T Samples ┆
- Neutron Samples ┆

IDEAL Version: ID13_0C_14
IDF